

Operate manual & Parts manual
Hand Pallet Truck with AC Pump

AC50-A WH10L-35-A

WH20L-51-A WH25L-51-A



Note: Owner and operator **MUST** read and understand this operating instructions before use this pallet truck.

ATTENTION:

1. The waste packages should be sorted and put into solid dustbins according to the materials and be collected disposal by local special environment protection bureau. To avoid pollution, it's forbidden to throw away the wastes randomly.
2. To avoid leaking during the use of the products, the user should prepare some absorbable materials (scraps of wooden or dry duster cloth) to absorb the leaking oil in time. To avoid second pollution to the environment, the used absorbable materials should be handed in to special departments in terms of local authorities.

Thank you for choosing our pallet truck. For your safety and correct operation, please carefully read the manual before use.

NOTE: All of the information reported herein is based on data available at the time of printing. The factory reserves the right to modify its own products at any time without notice or incurring in any sanction. Please verify with the factory for possible updates.

1. GENERAL SPECIFICATIONS

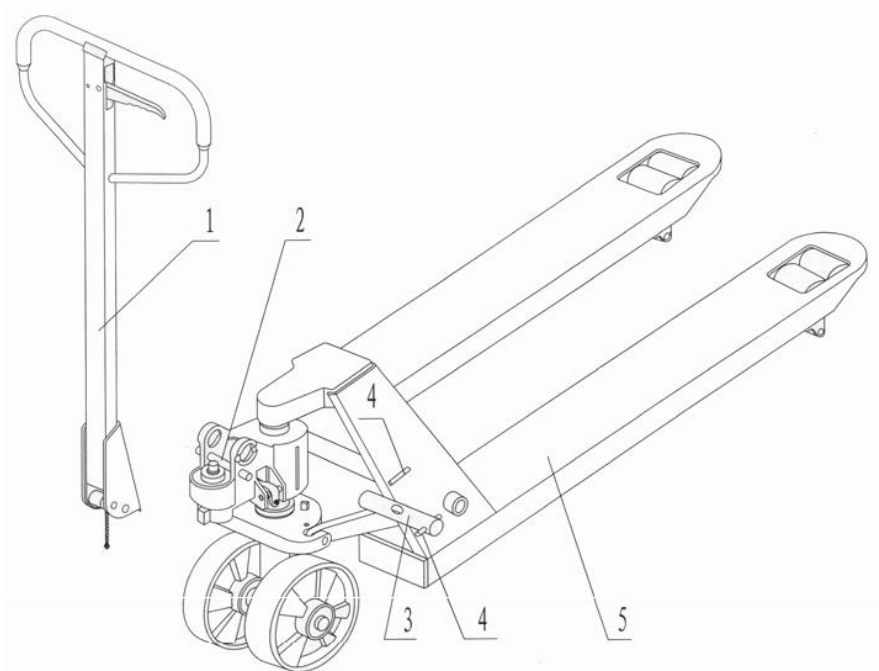
Model No.		AC50-A	WH10L-35-A	WH20L-51-A	WH25L-51-A
		Standard	Low profile		
Min. Fork Height	mm	85	35	51	
Max. Fork Height	mm	200	85	156	
Load Capacity	kg	5000	1000	2000	2500
Fork Length	mm	1150/1220	1120	1150/1220	
Width Overall Forks	mm	540/685	530/685	540/685	
Individual Fork Width	mm	180	160		
Single load wheel	mm	No available		Ø50*70	
Double load wheel	mm	Steel (78*66mm)	Ø34*58	Ø50*93	
Type of load wheel		Nylon(80*66mm)	Nylon or PU(Polyurethane)		
Steering Wheel size	mm	Ø178*50	Ø160*50	Ø180*50	
Type of steering wheel		Nylon or Iron	Nylon or PU(Polyurethane)		

Materials and specification are subject to change without notice.

2. TO ATTACH HANDLE TO PUMP UNIT

If you have purchased a wooden box of pallet truck, some assembly is required. Certainly, you need some tools, a hammer, a pliers, a spanner, etc; and some parts, one axle with hole, two elastic pins (**Note one is in the axle**), these parts are putted in a plastic bag, which is putted into the draw-bar.

NOTE: The number of draw-bar and pump should be the same.



1. Draw-bar 2. Pin 3. Axle with hole 4. Elastic pin 5. Fork frame
(Fig. 1)

When attaching the handle, you had better squat just behind the pallet truck. Then you:

2.1. Insert the draw-bar onto the pump piston (A), then use a hammer to insert the axle with hole(K) into the hydraulic pump and draw-bar **from the right to left**. (See fig. 2).



Fig.2

2.2. Let control handle to the 'LOWER' position, then pass the adjusting nut (G), adjusting bolt (F) and chain (E) through the hole of axle(K) with your hand (See fig. 3)

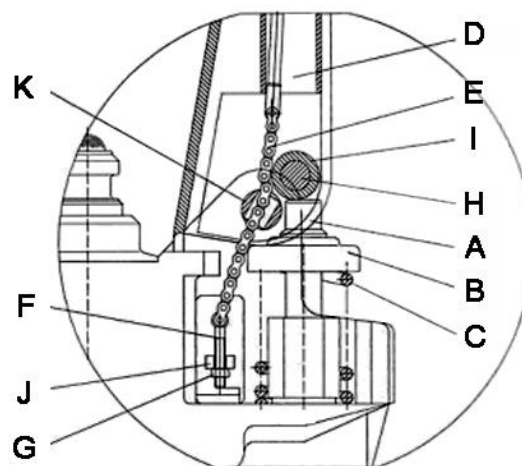


Fig.3

2.3. Press the draw-bar (D) down, take away the pin(#2) (See Fig. 1).

2.4. Let the control handle on 'RAISE' position, then raise the lever plate (J) with the pin (#2) and insert the adjusting bolt(F) into the front slot of lever plate, note to keep the adjusting nut (G) on the under side of the lever plate(J).

2.5 Use a hammer to tap another elastic pin into the axle with hole (K). The Draw-bar is now assembled to the pump.

3. TO ADJUST RELEASE DEVICE

On the draw-bar of this pallet truck, you can find the control handle which can be regulated in three positions :

Raise - handle down

Drive position - handle in center position

Lower - handle up, the lever moves back the drive position when released.

If however they have been changed, you can adjust according to following step:

3.1 If the forks elevate while pumping in the **DRIVE** position, turn the adjusting nut on the adjusting bolt or adjusting screw clockwise until pumping action does not raise the forks and the **DRIVE** position functions properly.

3.2 If the forks descend while pumping in the **DRIVE** position, turn the nut or adjusting screw counter-clockwise until the forks do not lower.

3.3 If the forks do not descend when the control handle is in the **LOWER** position, turn the nut or adjusting screw clockwise until raising the control handle lowers the forks. Then check the **DRIVE** position according to item 3.1 and 3.2 to be sure the nut or adjusting screw is in the proper position.

3.4 If the forks do not elevate while pumping in the **RAISE** position, turn the nut or adjusting screw counter-clockwise until the forks elevate while pumping in the **RAISE** position. Then check the **LOWER** and **DRIVE** position according to item 3.1, 3.2 and 3.3.

4. MAINTENANCE

Your pallet truck is largely maintenance-free.

4.1 Hydraulic Oil

Please check the oil level every six months. The oil capacity is about 0.3lt. Use the hydraulic type oil according to temperature scale below.

Temperature	Oil
-20°C~+40°C	L-HV46 Hydraulic oil

4.2 HOW TO EXPEL AIR FROM THE PUMP UNIT

The air may come into the hydraulic oil because of transportation or pump in upset position. It can cause that the forks do not elevate while pumping in the **RAISE** position. The air can be banished in the following way: let the control handle on the **LOWER** position, then move the handle up and down for several times.

4.3 DAILY CHECK AND MAINTENANCE

Daily check of the pallet truck can limit wear as much as possible. Special attention should be paid to the wheels, the axles, as thread, rags, etc. It may block the wheels. The forks should be unloaded and lowered in the lowest position when the job is over.

4.4 LUBRICATION

Use motor oil or grease to lubricate all moveable parts.

5. GUIDE TO SAFETY OPERATION

For safe operation of the Hand Pallet Truck, please read all warning signs and instructions here and on the pallet truck prior to use.

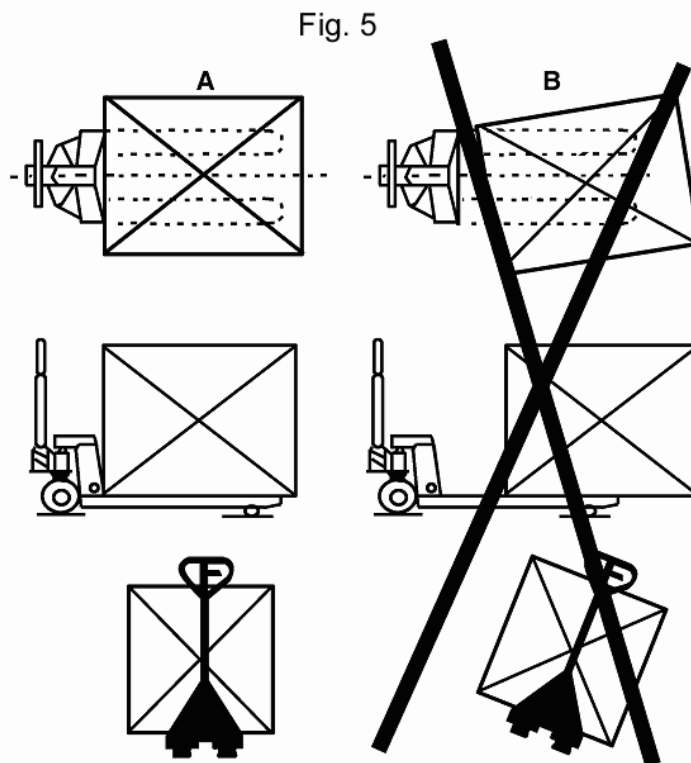
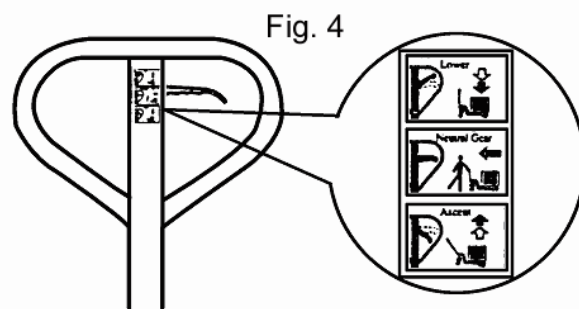
- 5.1 Do not operate the pallet truck unless you are familiar with it and have been trained or authorized to do so.
- 5.2 Do not operate the truck unless you have been trained and authorized. Give special attention to the wheels, the handle assembly, the forks, and the lower control.
- 5.3 Do not use the truck on sloping ground.
- 5.4 Never place any part of your body in the lifting mechanism or under the forks or load. Do not carry passengers.
- 5.5 We advise that operators should wear gloves and safety shoes.
- 5.6 Do not handle unstable or loosely stacked loads.
- 5.7 Do not overload the truck.
- 5.8 Always place loads centrally across the forks and not at the end of the forks (See Fig. 2).
- 5.9 The capacity of the truck assumes an evenly distributed load with the centre of the load being at the halfway point of the length of the forks.
- 5.10 Make sure that length of the forks matches the length of the pallet.
- 5.11 Lower the forks to lowest height when the truck is not being used.
- 5.12 In other specific conditions the operators should take extra care in operating the truck.

6. TROUBLES SHOOTING

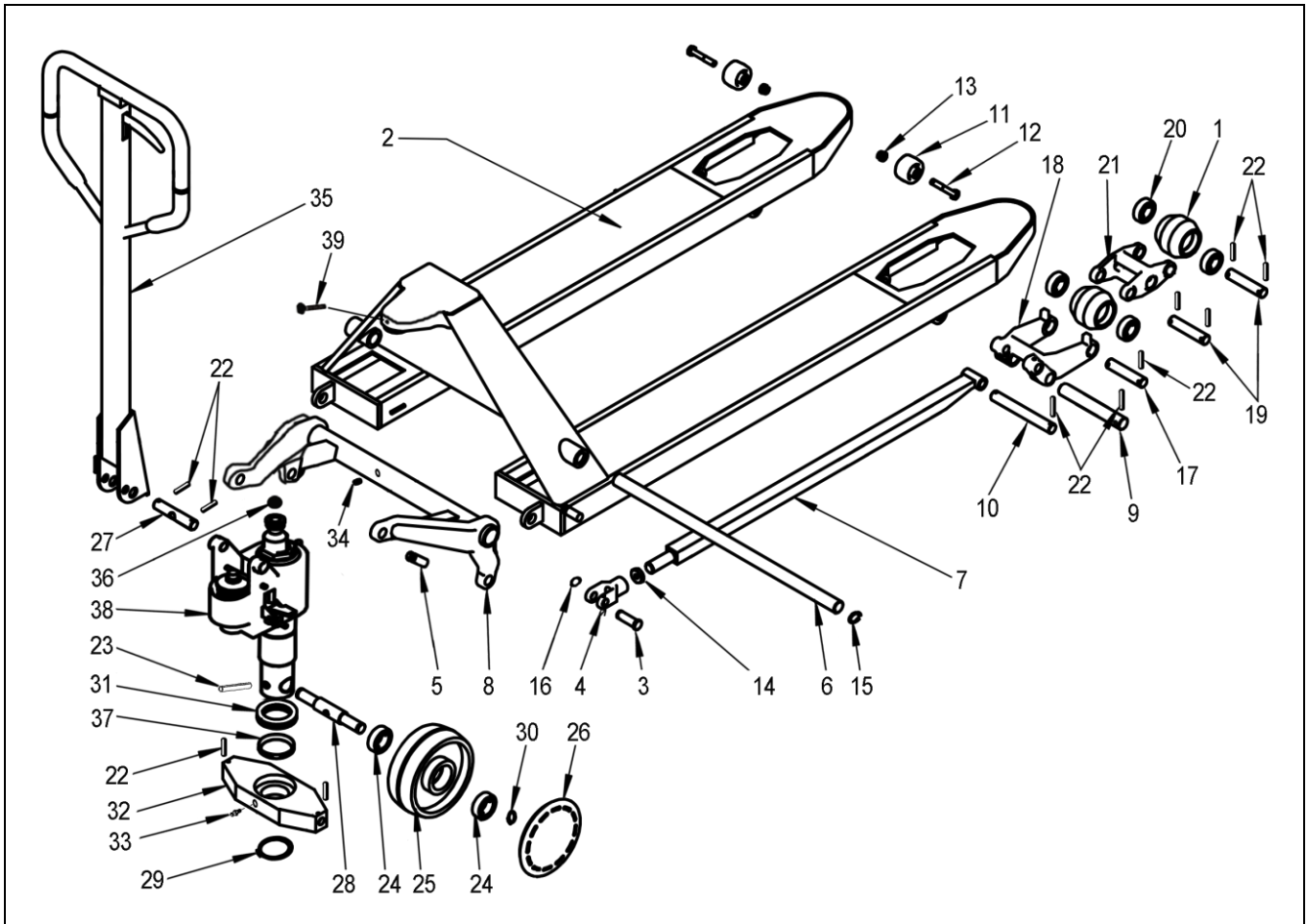
No	Trouble	CAUSE	ACTION
1	The forks can not be up the max. height.	- The hydraulic oil is not enough.	- Pour in the oil.
2	The forks can not be lifted up.	- Without hydraulic oil. - The oil has impurities. - The nut is too high or the screw is too close, keep the pumping valve open. - Air come into the hydraulic oil.	- Fill in the oil. - Change the oil. - Adjust the nut or the screw .(see item 3.4) - Banish the air.(see item 4.2)
3	The forks can not be descended.	- The piston rod or pump body is deformed resulting from partial loading slanting to one side or over-loading. - The fork was kept in the high position for long time with piston rod bared to arise in rusting and jamming of the rod. - The adjusting nut or the screw is not in the correct position.	- Replace the piston rod or pump body. - Keeping the fork in the lowest position if not using, and pay more attention to lubricate the rod. - Adjust the nut or the screw. (see item 3.3)
4	Leaks	- Sealing parts worn or damaged. - Some part cracked or worn into small.	- Replace with the new one. - Replace with the new one.

5	The fork descends without the release valve worked.	<ul style="list-style-type: none"> - The impurities in the oil cause the release valve to be unable to close tight. - Some parts of hydraulic system is cracked or bored. - Air come into the oil. - Sealing parts worn or damaged. - The adjusting nut or the screw is not in the correct position. 	<ul style="list-style-type: none"> - Replace with new oil. - Inspect and replace the waste parts. - Banish the air. (See item 4.2) - Replace with the new one. - Adjusting the nut or the screw . (See item 3.2)
---	---	---	---

***NOTE: DO NOT ATTEMPT TO REPAIR THE PALLET TRUCK UNLESS YOU ARE TRAINED AND AUTHORIZED TO DO SO.**

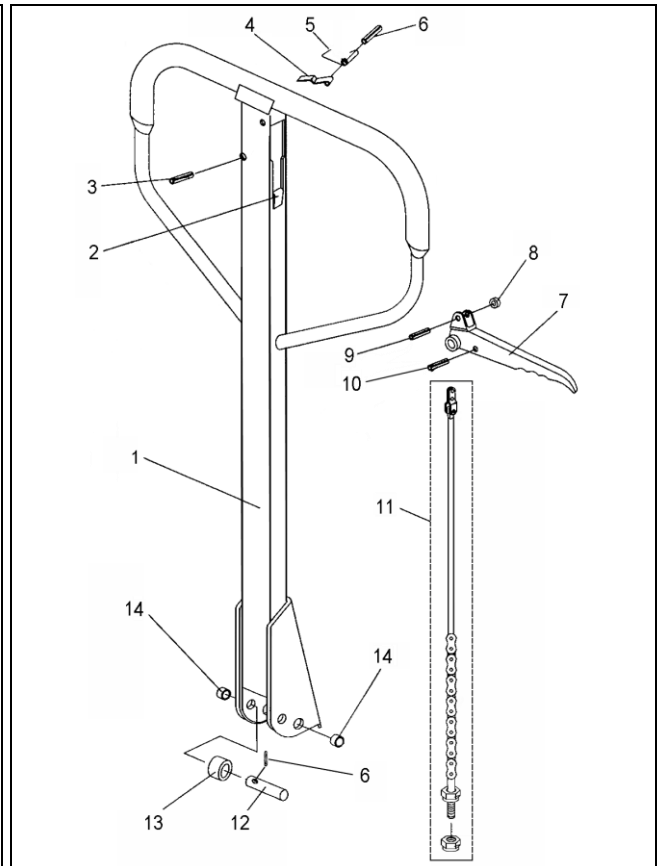
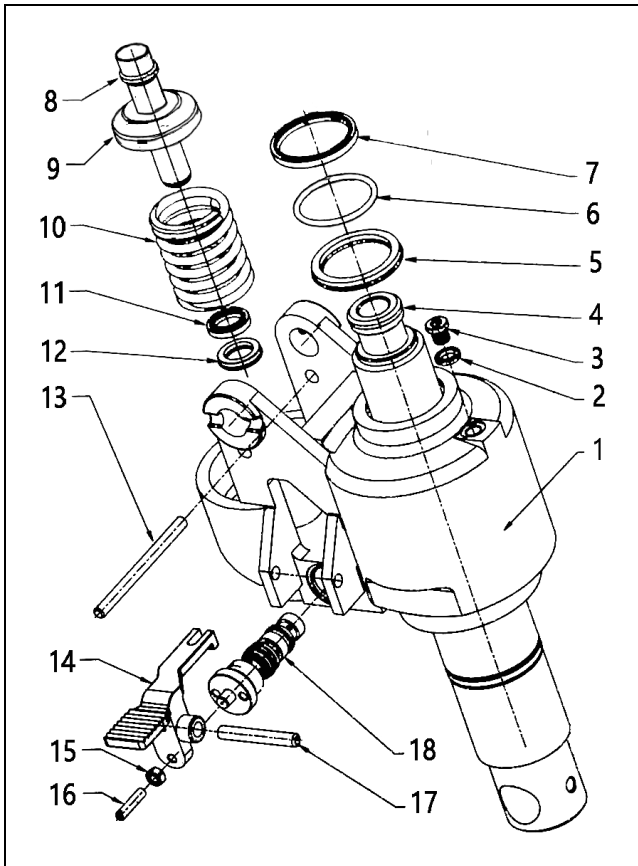


AC50-A General parts



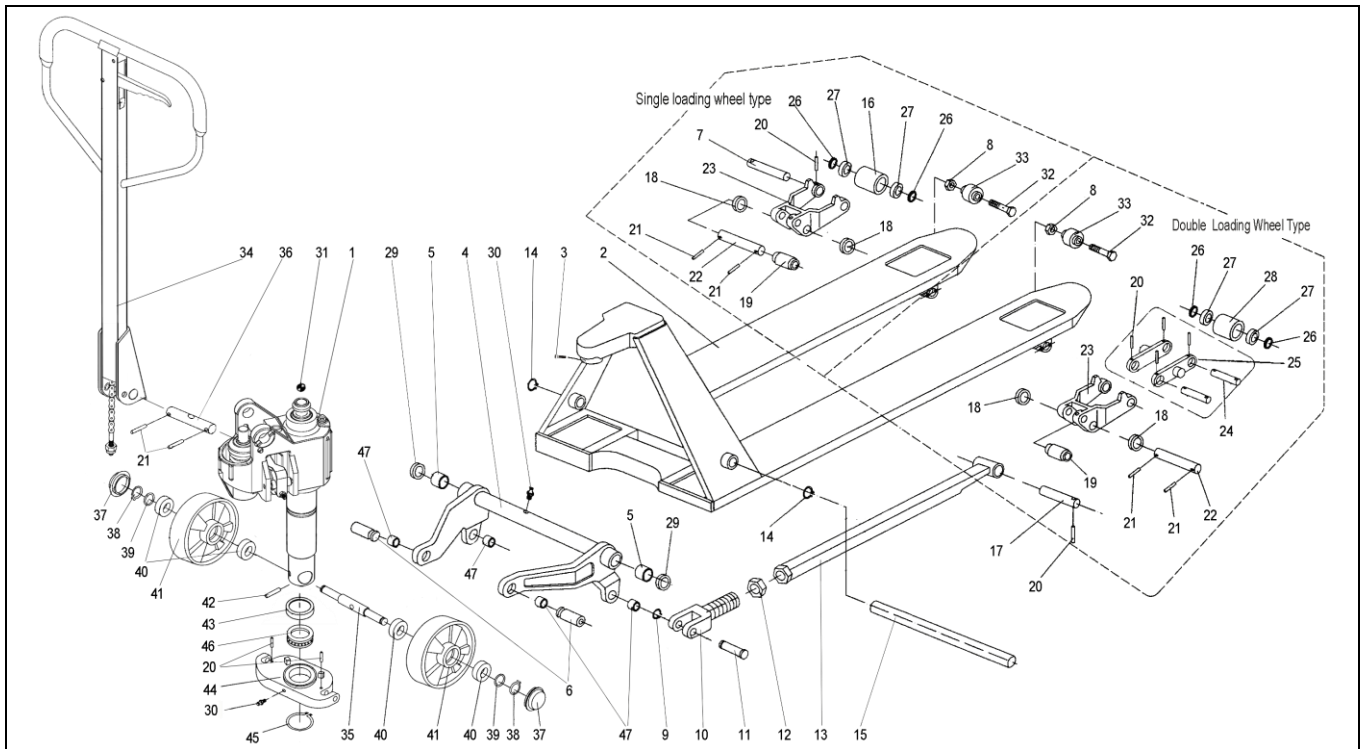
Item	Parts No.	Parts details		Qty.	Item	Parts No.	Parts details		Qty.
1	17050101	Loading wheel	Steel Ø78*66	4	19	17050119	Shaft for loading wheel Ø20*94		4
	17050101-1		NylonØ80*66		20	17050120	Bearing 6204#		8
2	17050102	Truck frame		1	21	17050121	Wheel cradle		2
3	17050103	Axle for joint Ø25*64		2	22	17050122	Spring pin Ø5*35		16
4	17050104	Joint for push rod M27		2	23	17050123	Spring pin Ø8*50		1
5	17050105	Connect axle Ø28*64		2	24	17050124	Bearing 6205#		2
6	17050106	Shaft for fork frame Ø25	550	1	25	17050125	Steering wheel	Steel	2
	17050106-1		685	1		17050125-1	Ø178*50mm	Nylon	2
7	17050107	Push rod	1150	2	26	17050126	Steering wheel cover		2
	17050107-1		1220	2	27	17050127	AC Shaft for handle Ø20*103		1
8	17050108	Rocker arm	550	1	28	17050128	Shaft for steering wheel Ø28*194		1
	17050108		685	1	29	17050129	Outside Circlip Ø60		1
9	17050109	Axle for wheel fork Ø22*176		2	30	17050130	Inside Circlip Ø25		2
10	17050110	Shaft for Push rod Ø18*115		2	31	17050131	Bearing #51112		1
11	17050111	Entry roller		2	32	17050132	Thrust Plate		1
12	17050112	Bolt (M10*55)		2	33	17050133	Grease nipple M8		1
13	17050113	Locking Nut M10		2	34	17050134	Grease nipple M6		1
14	17050114	Nut M27*1.5		2	35	17050135	Handle assy.		1
15	17050115	Snap ring Ø30		2	36	17050136	Steel ball Ø19		1
16	17050116	Snap ring Ø20		2	37	17050137	Dust cover		1
17	17050117	Axle Ø25*128		2	38	17050138	AC50 pump assy.		1
18	17050118	Wheel fork		2	39	17050139	Bolt M8*16		1

AC50-A Pump & handle parts details



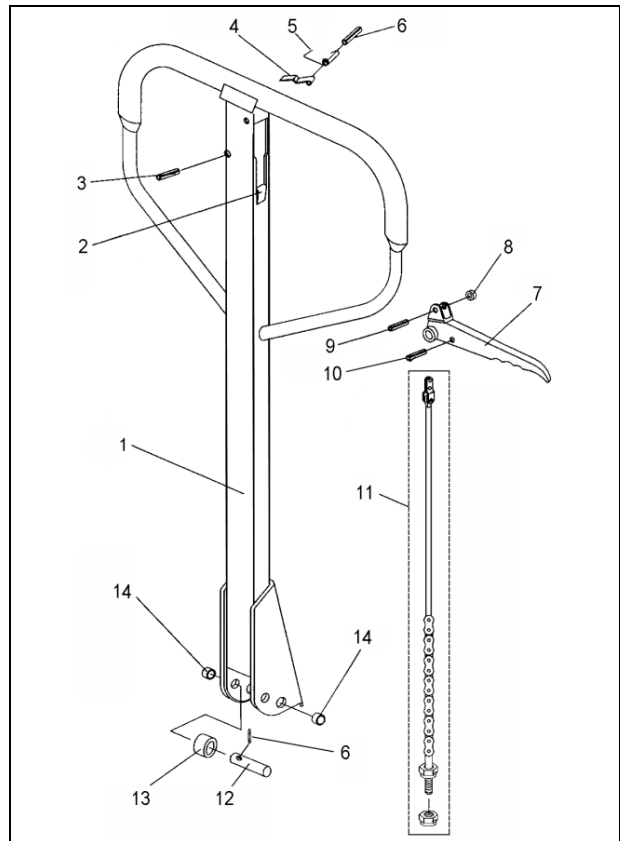
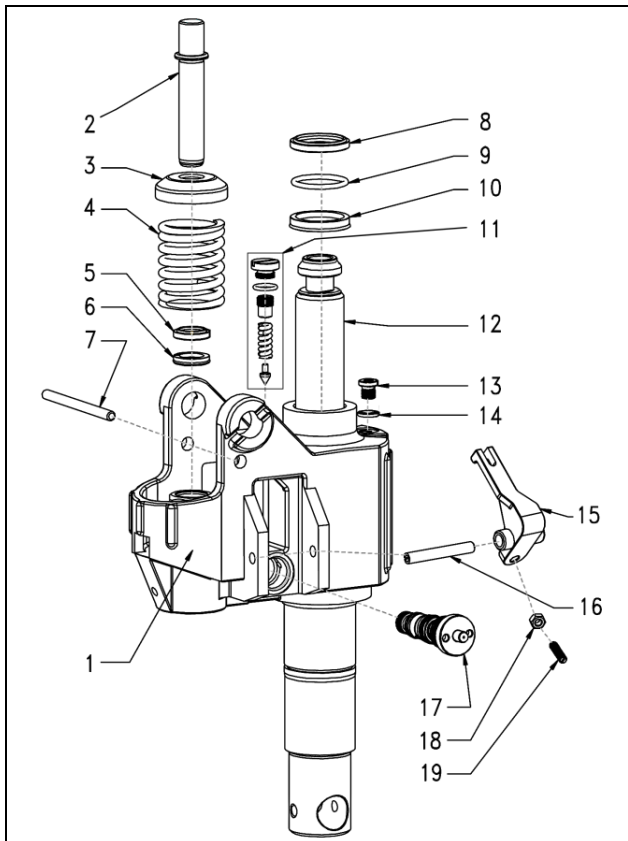
Item	Parts No.	Parts name	Qty.	Item	Parts No.	Parts details	Qty.
1	17050201	AC pump body	1	1	17050301	Draw-bar	1
2	17050202	Composite gasket $\Phi 10 \times 2$	1	2	17050302	Rubber pad	1
3	17050203	Plug screw M10*1*10	1	3	17050303	Spring Pin	1
4	17050204	Piston rod $\Phi 45 \times 290$	1	4	17050304	Blade Spring	1
5	17050205	Seal washer UHS $\Phi 45 \times 55 \times 6$	1	5	17050305	Torsional Spring	1
6	17050206	O-ring $\Phi 45 \times 3.55$	1	6	17050306	Spring Pin	1
7	17050207	Dust ring DHS $\Phi 45 \times 53 \times 5/6.5$	1	7	17050307	Control Handle	1
8	17050208	Small pump core $\Phi 18 \times 97$	1	8	17050308	Roller	1
9	17050209	Spring cap 49*2*15	1	9	17050309	Spring Pin	2
10	17050210	Spring $\Phi 5.5 \times 48 \times 115$	1	10	17050310	Spring Pin	1
11	17050211	Dust ring $\Phi 18 \times 26 \times 4.5/6$	1	11	17050311	Release rod & chain assy.	1
12	17050212	Seal washer $\Phi 18 \times 26 \times 5$	1	12	17050312	Roller Axle	1
13	17050213	Pole $\Phi 7 \times 95$	1	13	17050313	Pressure Roller	1
14	17050214	Lever plate 5#	1	14	17050314	Bushing	2
15	17050215	Nut M6*1	1				
16	17050216	Screw M6*1*25	1				
17	17050217	Spring pin $\Phi 8 \times 56$	1				
18	17050218	Integrated valve	1				
*	17050219	Seal kits (Item 5/6/7/11/12)	1				

WH20L-51-A/WH25L-51-A Frame parts details



Item	Parts No.	Parts details	Qty.	Item	Parts No.	Parts details	Qty.	
1	17070101	AC Oil pump	1	24	17070124	Shaft for double load wheel Ø17*94	4	
2	17070102	Fork Frame for WH20L-51-A	1	25	17070125	Tandem Mounting Plate	4	
	17070102-1	Fork Frame for WH25L-51-A	1	26	17070126	Washer	4/8	
3	17070103	Screw M6*14	1	27	17070127	Bearing	4/8	
4	17070104	Rocker arm	540	1	28	17070128	Double loading wheel Ø50*70mm	4
	17070104-1		685	1		17070128-1	Double loading wheel Ø50*70mm	4
5	17070105	Bushing	2	29	17070129	Plastic gasket	2	
6	17070106	Shaft Ø16*48	2	30	17070130	Grease nipple	1	
7	17070107	Shaft for single load wheel Ø17*122	2	31	17070131	Steel ball Ø18	1	
8	17070108	Locking Nut M6	2	32	17070132	Bolt M6*50	2	
9	17070109	Outside Circlip 16	2	33	17070133	Entry roller	2	
10	17070110	Joint for push rod	2	34	17070134	AC Handle assembly	1	
11	17070111	Axle for joint Ø16*49	2	35	17070135	Shaft for steering wheel Ø25*170	1	
12	17070112	Nut M20*1.5	2	36	17070136	Shaft for handle Ø20*103	1	
13	17070113	Push rod	1220	2	37	17070137	Steering wheel cover	1
	17070113-1		1150	2	38	17070138	Outside Circlip 20	2
14	17070114	Inside Circlip 25	2	39	17070139	Gasket	2	
15	17070115	Shaft for fork frame	685	1	40	17070140	Bearing 6204	4
	17070115-1		540	1	41	17070141	Steering wheel	PU Ø180*50
16	17070116	Single loading wheel Ø50*93	2	17070141-1		Nylon Ø180*50		2
	17070116-1	Nylon	2	17070141-2		Rubber Ø180*50		2
17	17070117	Shaft for Push rod Ø14*82	2	42	17070142	Spring pin Ø8*45	1	
18	17070118	Plastic gasket	4	43	17070143	Bearing sleeve	1	
19	17070119	Exit roller	2	44	17070144	Thrust Plate	1	
20	17070120	Spring pin Ø5*30	5/7	45	17070145	Oil cylinder circlip 55	1	
21	17070121	Spring pin Ø5*35	4	46	17070146	Oil cylinder bearing 51111	1	
22	17070122	Shaft for wheel fork Ø16*144	2	47	17070147	Bushing	4	
23	17070123	Wheel fork	2					

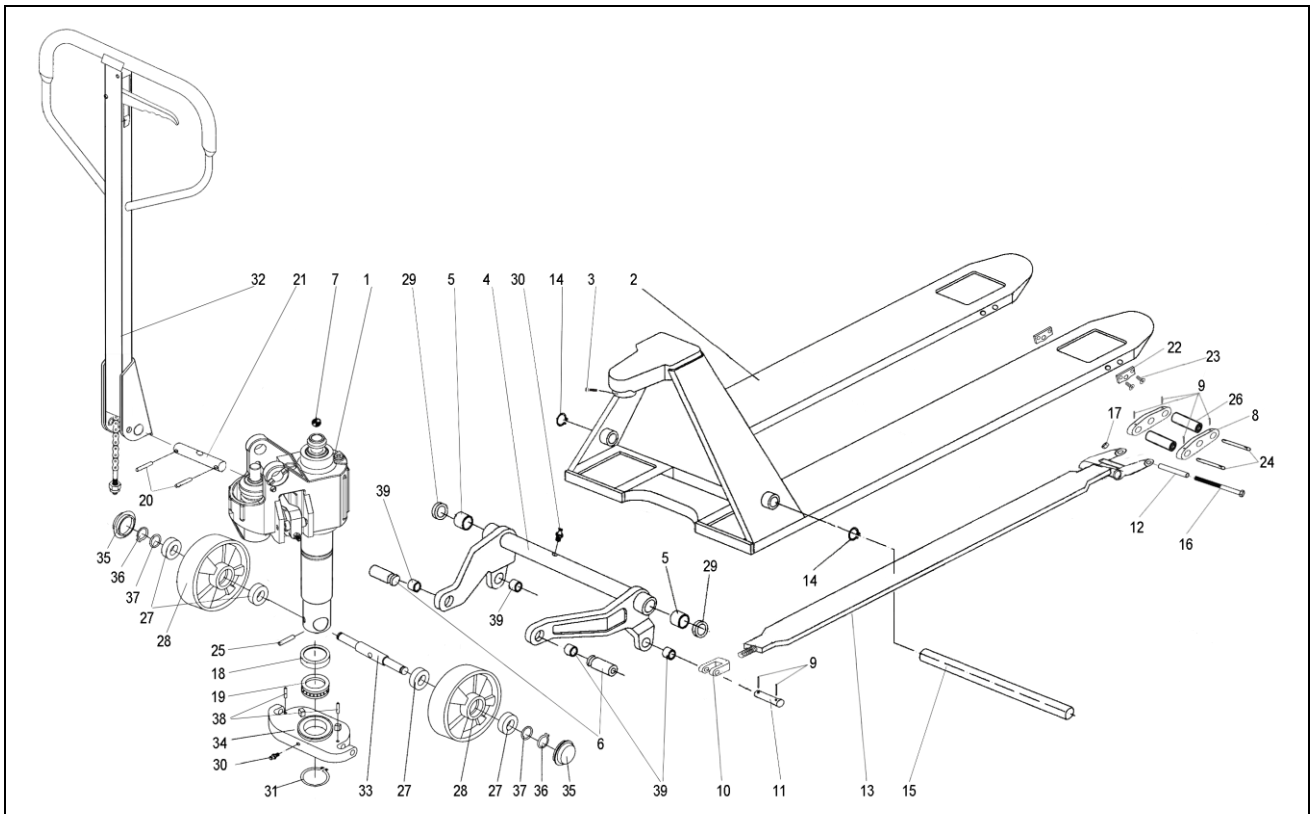
WH20L-51-A/WH25L-51-A Pump & handle parts details



Item	Parts No.	Parts name	Qty.
1	17070201	AC pump body	1
2	17070202	Small pump core Ø18*107	1
3	17070203	Spring cover Ø49*2*15	1
4	17070204	Big spring Ø5.5*48*115	1
5	17070205	Dust ring Ø18*26*4.5/6	1
6	17070206	Seal washer Ø18*26*5	1
7	17070207	Blocking bar Ø7*95	1
8	17070208	Dust ring Ø35*43*5/6.5	1
9	17070209	O-rings Ø35*3.55	1
10	17070210	Seal washer Ø35*43*7	1
11	17070211	Safety valve assy.	1
12	17070212	Piston rod Ø35*278	1
13	17070213	Plug M10*1*9.5	1
14	17070214	Washer 10*2	1
15	17070215	Lever plate 8 #	1
16	17070216	Spring pin Ø8*52	1
17	17070217	Integrated valve	1
18	17070218	Nut M8	1
19	17070219	Screw M8*25	1
***	17070220	Seal kits AC(Item 5/6/8/9/10)	1

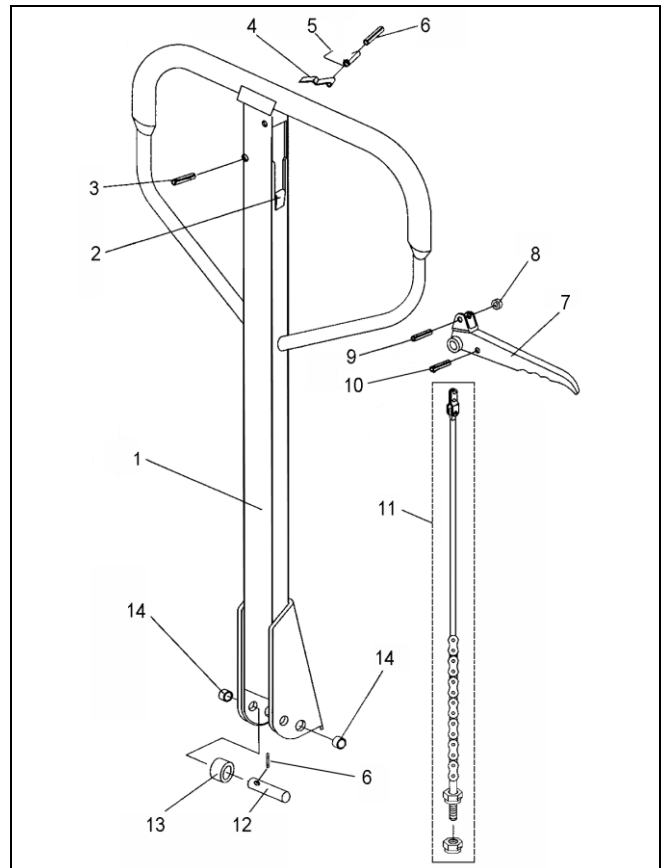
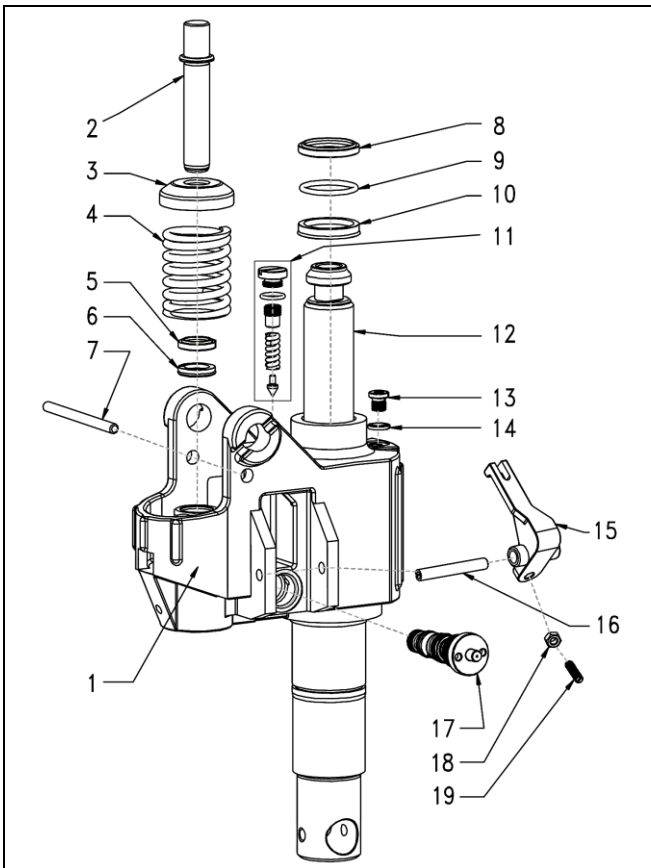
Item	Parts No.	Parts details	Qty.
1	17070301	Draw-bar	1
2	17070302	Rubber pad	1
3	17070303	Spring Pin	1
4	17070304	Blade Spring	1
5	17070305	Torsional Spring	1
6	17070306	Spring Pin	1
7	17070307	Control Handle	1
8	17070308	Roller	1
9	17070309	Spring Pin	1
10	17070310	Spring Pin	1
11	17070311	Release rod & chain assy.	1
12	17070312	Roller Axle	1
13	17070313	Pressure Roller	1
14	17070314	Bushing	2

WH10L-35-A Frame parts details



Item	Parts No.	Parts details	Qty.	Item.	Parts No.	Parts details	Qty.	
1	17060101	AC Oil pump (Special)	1	21	17060121	Shaft for handle Ø20*103	1	
2	17060102	Fork Frame	1	22	17060122	Connected socket	4	
3	17060103	Screw M8*16	1	23	17060123	Bolt M10*20	8	
4	17060104	Rocker arm	530	1	24	17060124	Shaft for double load wheel Ø12*78	4
	17060104-1		680	1	25	17060125	Spring pin Ø8*45	1
5	17060105	Bushing	2	26	17060126	Steel Double loading wheel Ø34*58	4	
6	17060106	Shaft Ø16*48	2	27	17060127	Bearing 6204	4	
7	17060107	Steel ball Ø18	1		17060128		PU	2
8	17060108	Tandem Mounting Plate	4	28	17060128-1	Steering wheel Ø160*50	Nylon	2
9	17060109	Spring pin Ø4*25	12		17060128-2		Rubber	2
10	17060110	Joint for push rod	2	29	17060129	Plastic gasket	2	
11	17060111	Axle for joint Ø12*48	2	30	17060130	Grease nipple	1	
12	17060112	Bushing Ø20*84	2	31	17060131	Oil cylinder circlip 55	1	
13	17060113	Push rod (1120)	2	32	17060132	AC Handle assembly	1	
14	17060114	Inside Circlip 25	2	33	17060133	Shaft for steering wheel Ø25*170	1	
15	17060115	Shaft for fork frame	530	1	34	17060134	Thrust Plate	1
	17060115-1		680	1	35	17060135	Steering wheel cover	1
16	17060116	Bolt Ø12*125	2	36	17060136	Outside Circlip 20	2	
17	17060117	Nut Ø12	2	37	17060137	Gasket	2	
18	17060118	Bearing sleeve	1	38	17060138	Spring pin Ø5*30	2	
19	17060119	Oil cylinder bearing 51111	1	39	17060139	Bushing	4	
20	17060120	Spring pin Ø5*35	2					

WH10L-35-A Pump & handle parts details



Item	Parts No.	Parts name	Qty.
1	17060201	AC pump body	1
2	17060202	Small pump core Ø18*107	1
3	17060203	Spring cover Ø49*2*15	1
4	17060204	Big spring Ø5.5*48*115	1
5	17060205	Dust ring Ø18*26*4.5/6	1
6	17060206	Seal washer Ø18*26*5	1
7	17060207	Blocking bar Ø7*95	1
8	17060208	Dust ring Ø35*43*5/6.5	1
9	17060209	O-rings Ø35*3.55	1
10	17060210	Seal washer Ø35*43*7	1
11	17060211	Safety valve assy.	1
12	17060212	Piston rod (Special)	1
13	17060213	Plug M10*1*9.5	1
14	17060214	Washer 10*2	1
15	17060215	Lever plate 8 #	1
16	17060216	Spring pin Ø8*52	1
17	17060217	Integrated valve	1
18	17060218	Nut M8	1
19	17060219	Screw M8*25	1
***	17060220	Seal kits AC(Item 5/6/8/9/10)	1

Item	Parts No.	Parts details	Qty.
1	17060301	Draw-bar	1
2	17060302	Rubber pad	1
3	17060303	Spring Pin	1
4	17060304	Blade Spring	1
5	17060305	Torsional Spring	1
6	17060306	Spring Pin	1
7	17060307	Control Handle	1
8	17060308	Roller	1
9	17060309	Spring Pin	1
10	17060310	Spring Pin	1
11	17060311	Release rod & chain assy.	1
12	17060312	Roller Axle	1
13	17060313	Pressure Roller	1
14	17060314	Bushing	2